

Sarasota High School
June 26, 2018

June 19, 2018
**Review of SHS Security & Safety,
Community Input & Ideas**

June 26, 2018
**Review of Community Concerns
and Ideas, Confirm Community
Enhancement Priorities**

July/August, 2018
**School Avenue Vacation
Application to City of Sarasota**

School Avenue Vacation



Sarasota High School

June 26, 2018

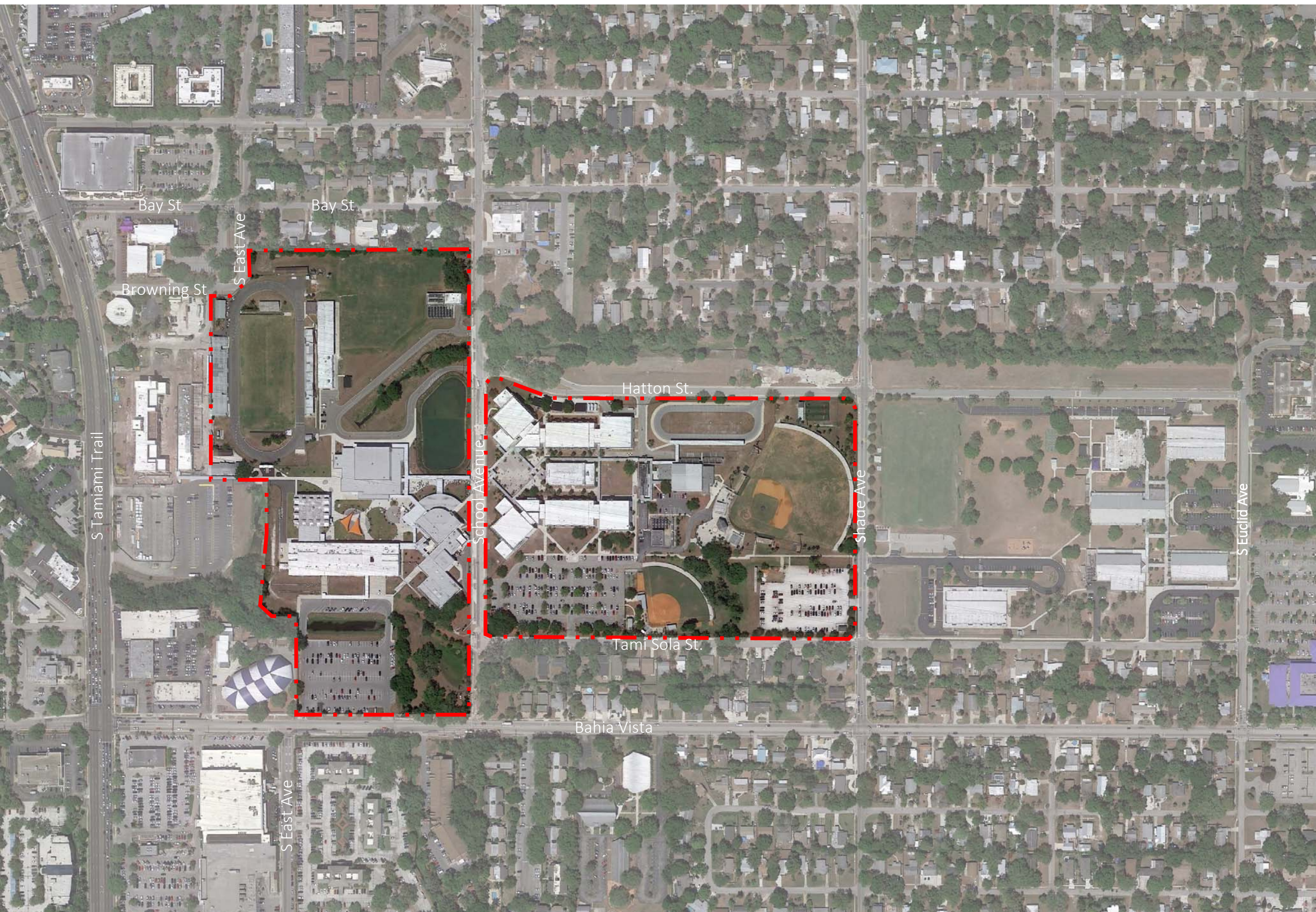
Table 1 – See Large Map

Table 2 – See Large Map

Table 3 – See Large Map

Other Ideas:

- Sharrows
- No Sharrows
- Identify/install trees, increase canopy
- Public Safety, Emergency Vehicles
- Circulate vehicles around neighborhood
- SHS as Hurricane Shelter
- Bike Lanes on Hatton, Shade, Tami Sola; get right of way from School Board property
- In July 2018 – lines across School Ave to note traffic Volume/Time of Day/Speed; how many cars impacted in June & July when school not in session



Sarasota High School

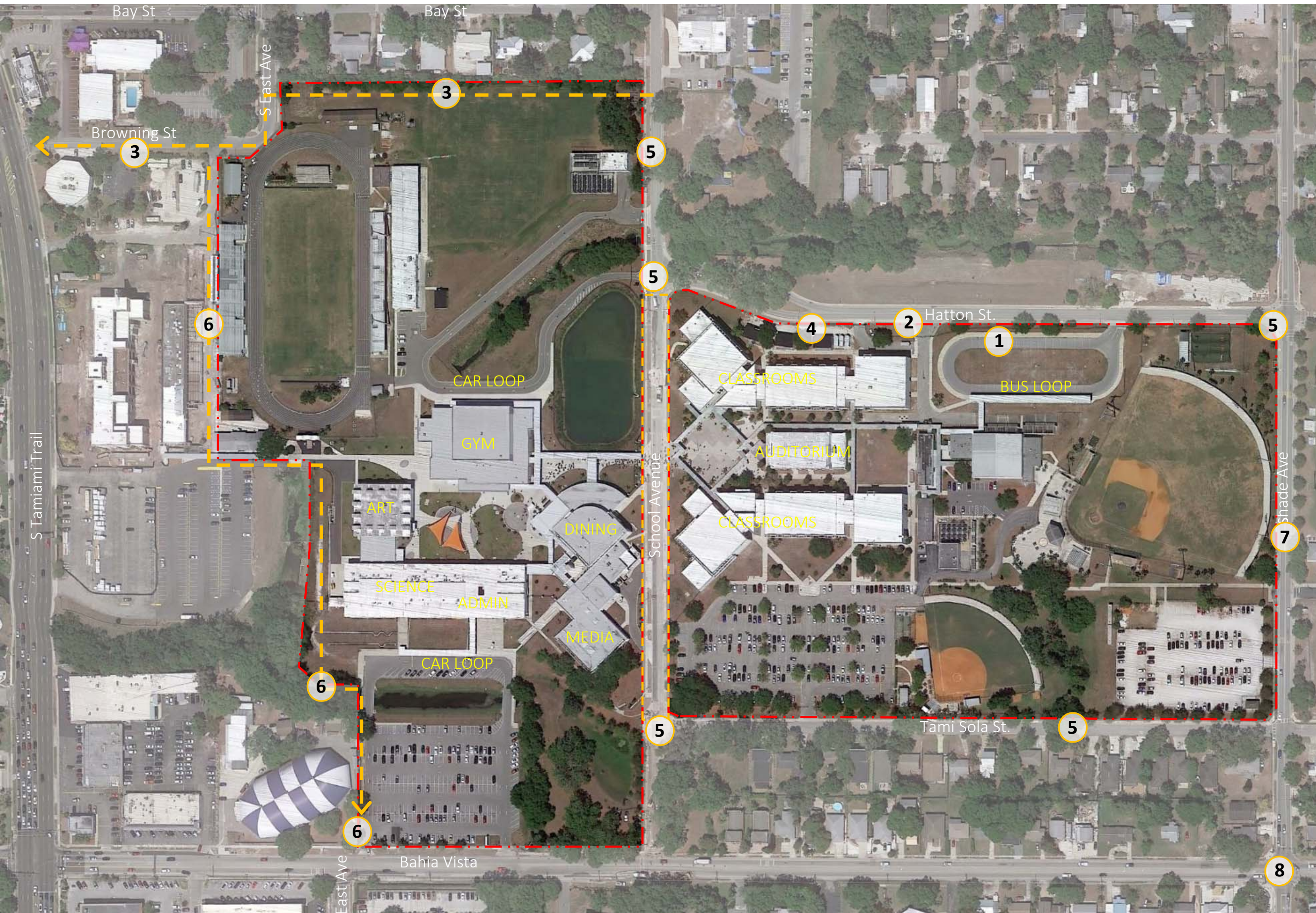
June 19, 2018

Table 1 - Priorities

1. Redirect band ●●
2. Not increase sidewalk, Hatton St will be improved at some point
 - Pedestrian sidewalk (School Ave to S. Tamiami)
3. Pedestrian Pathway (10'-15')
4. Charcoal Fences (10')
5. Wayfinding
6. Bike/Pedestrian ●●●
7. vs. item #2 above (increase sidewalk)
8. Re-time traffic signals

Other notes:

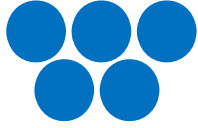
- Has anyone talked with SSIS, other schools?
- Open up Bay/East? Request City ●●●●●
- Do traffic counts June/July ●●







Sarasota High School

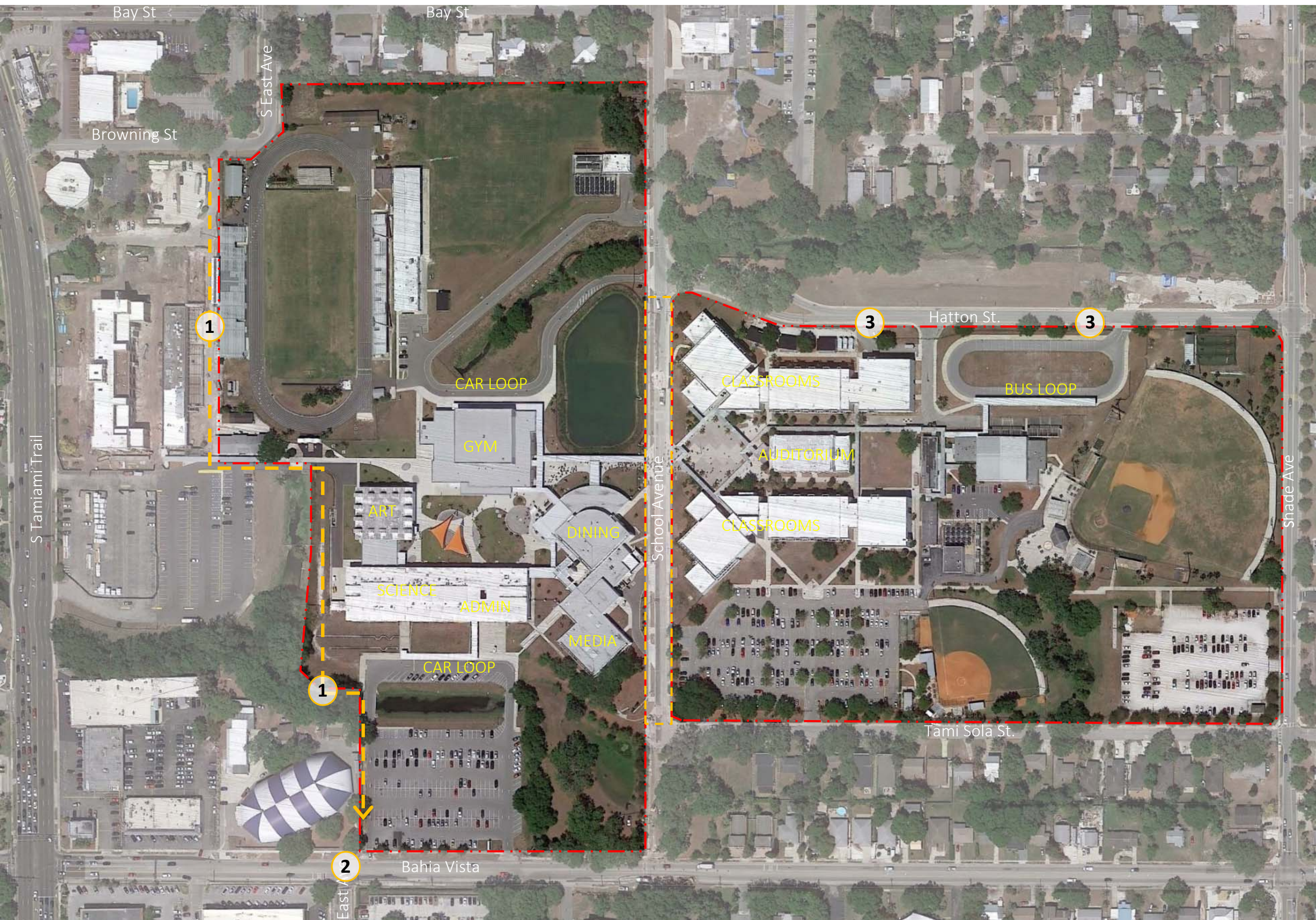
June 19, 2018

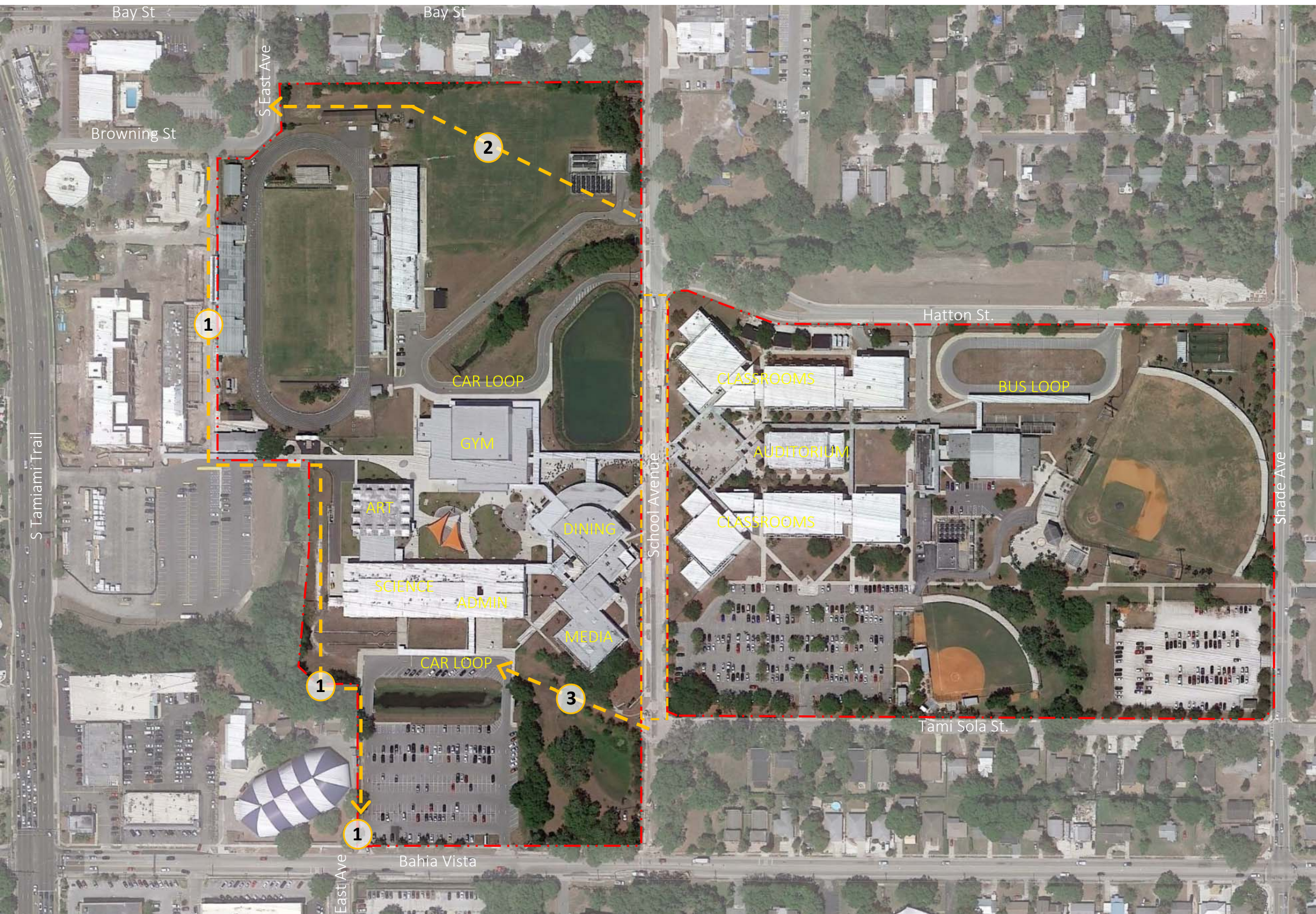
Table 2 - Priorities

1. Create walkway 
2. Safe crossing
3. More shade trees North side of Hatton St.

Other notes:

- Natural walkway to Publix 
- Pervious paving
- Trees in parking lots as possible  
- More decorative fencing 
- Wider sidewalk at Shade Ave
- Mural/Art at Baseball wall





Sarasota High School

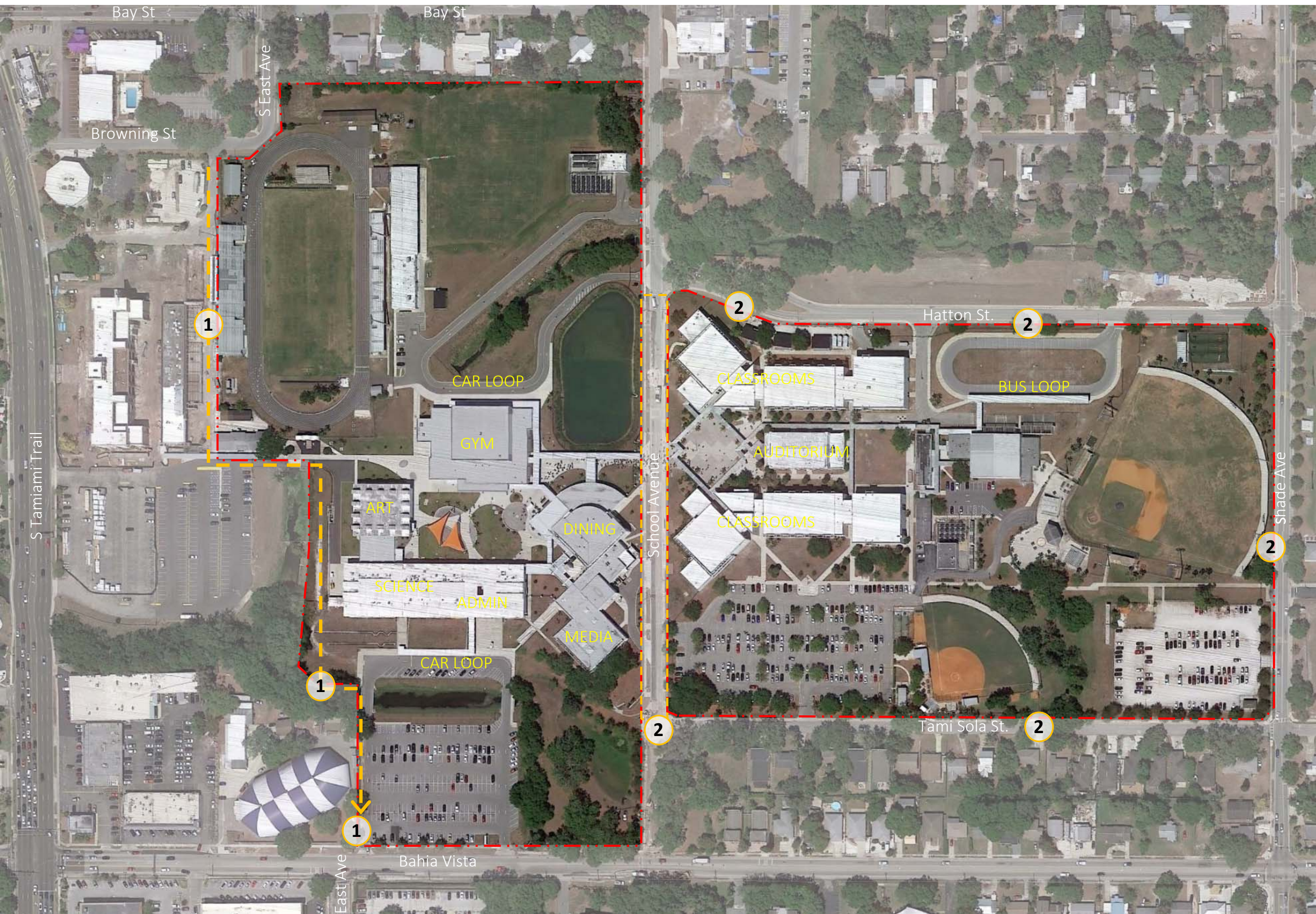
June 19, 2018

Table 3 - Priorities

1. Create Access Road,
 - 1. Pedestrians
 - 2. Bicycles
 - 3. Cars (not trucks)
2. Extend Hatton St.
3. Restore Tami Sola St.

- Other notes:
- Roundabout at East Ave S and Bahia Vista
 - Close car ingress/egress off of Bahia Vista
 - Right in/Right out at School Ave and Bahia Vista





Sarasota High School
 June 26, 2018

Common Ideas

1. WEST
 Avenue of The Arts
2. EAST
 Walk and Bike Path
 Wayfinding
 Shade Trees

Goals

Consensus of Ideas, yet keep in mind:

- Budget Limitations
- DRC Process
- Permitting
- Utilities
- Schedule
- Unforeseen Obstacles



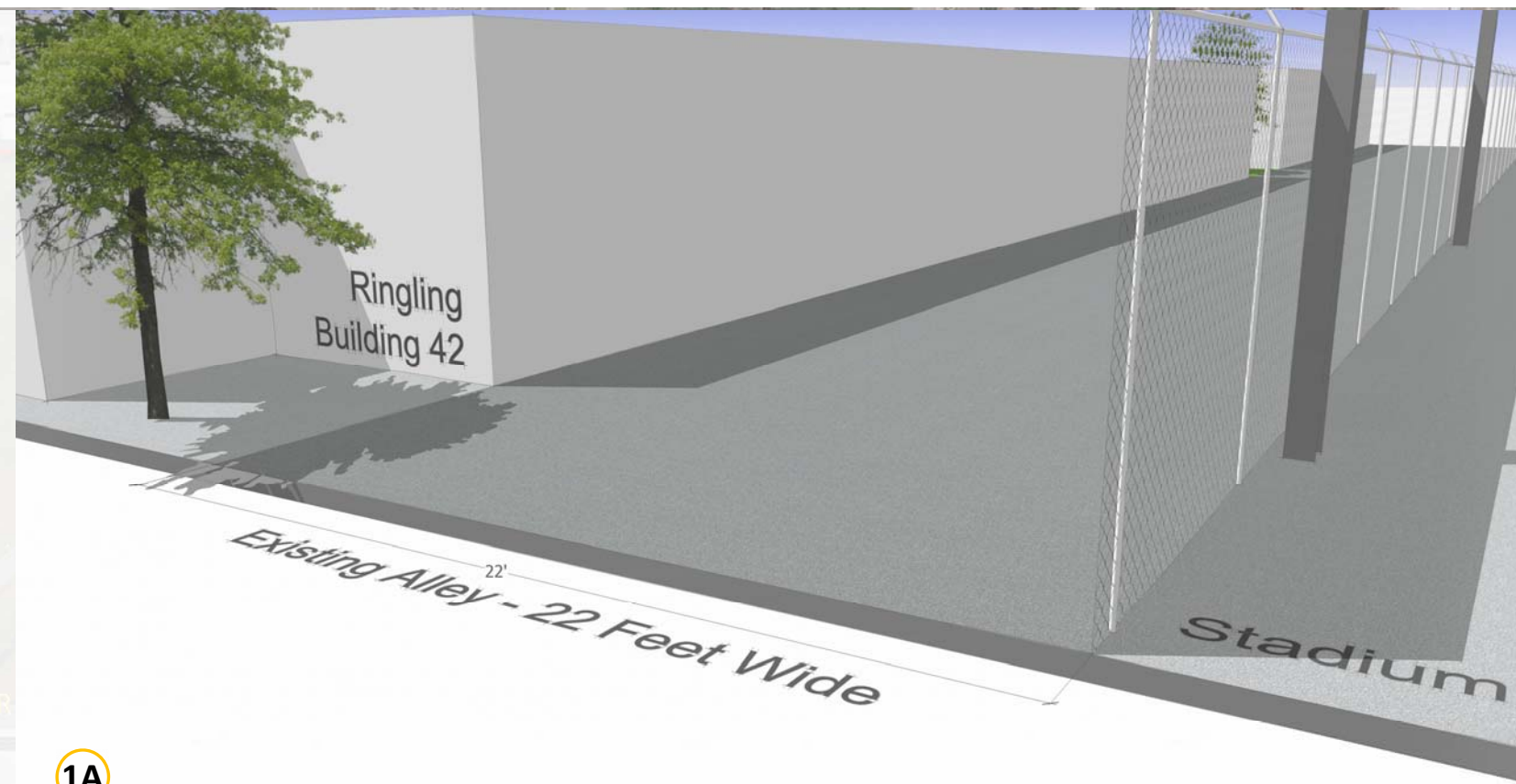
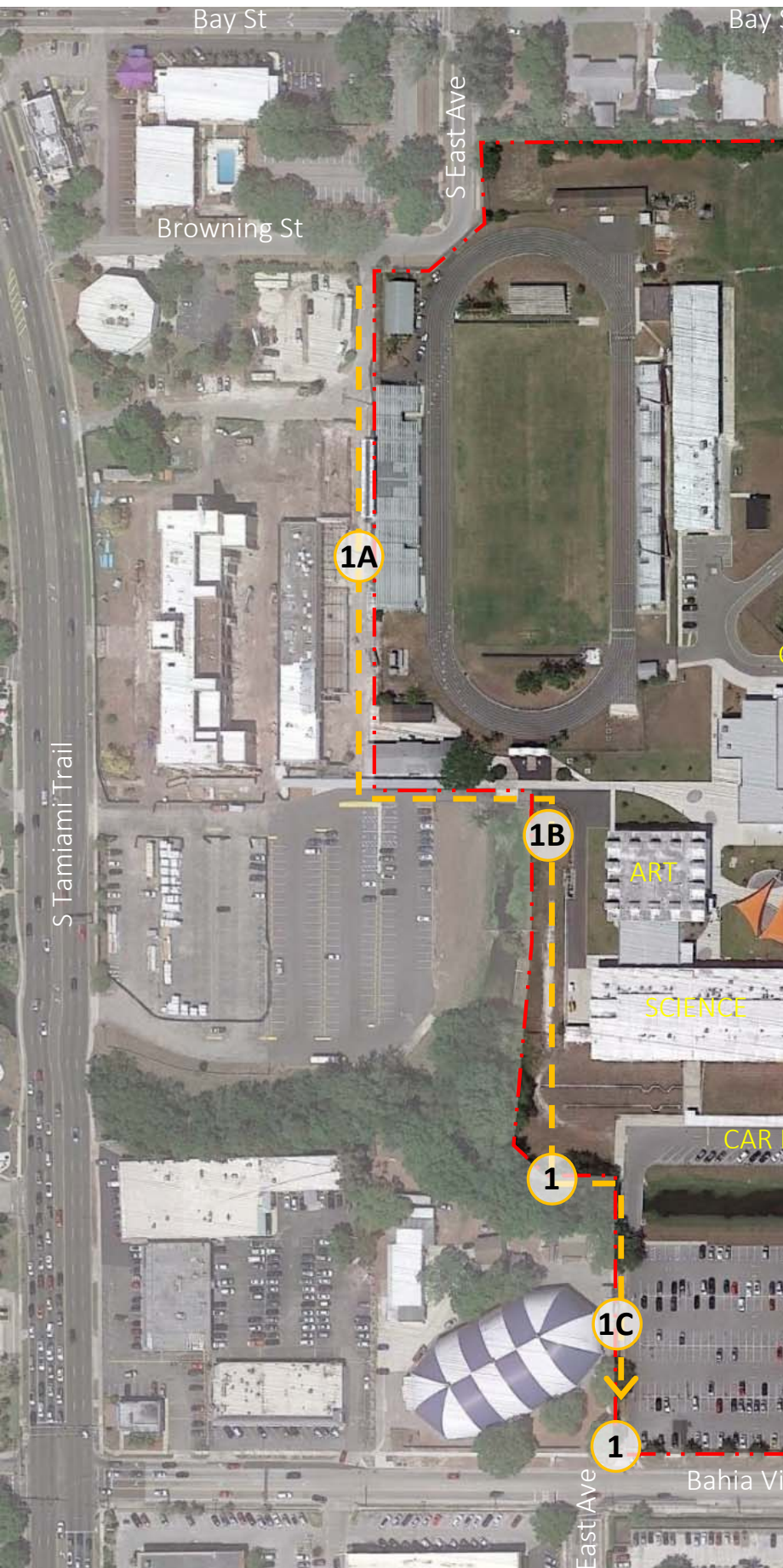
Common Ideas

1. WEST
Avenue of The Arts
2. EAST
Walk and Bike Path
Wayfinding
Shade Trees

Goals

Consensus of Ideas, yet keep in mind:

- Budget Limitations
- DRC Process
- Permitting
- Utilities
- Schedule
- Unforeseen Obstacles



1A

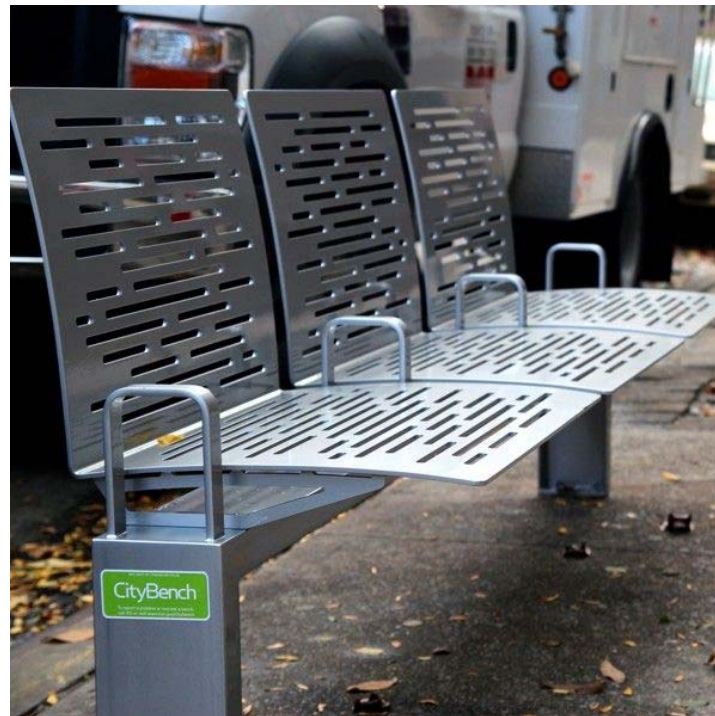


1A





Seating & Benches



Sarasota High School
June 26, 2018



WEST COSTS

1A: Walk/Bike Path

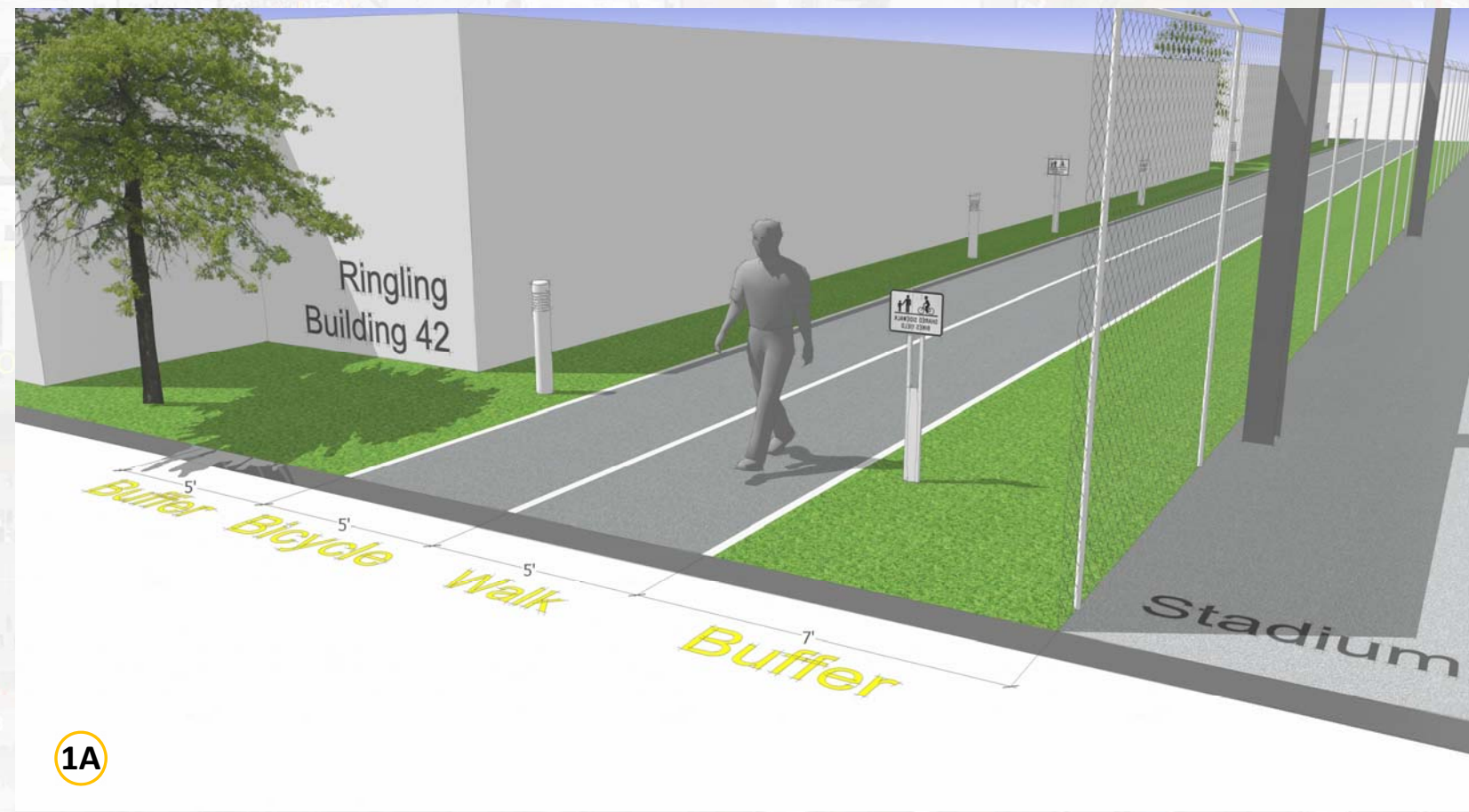
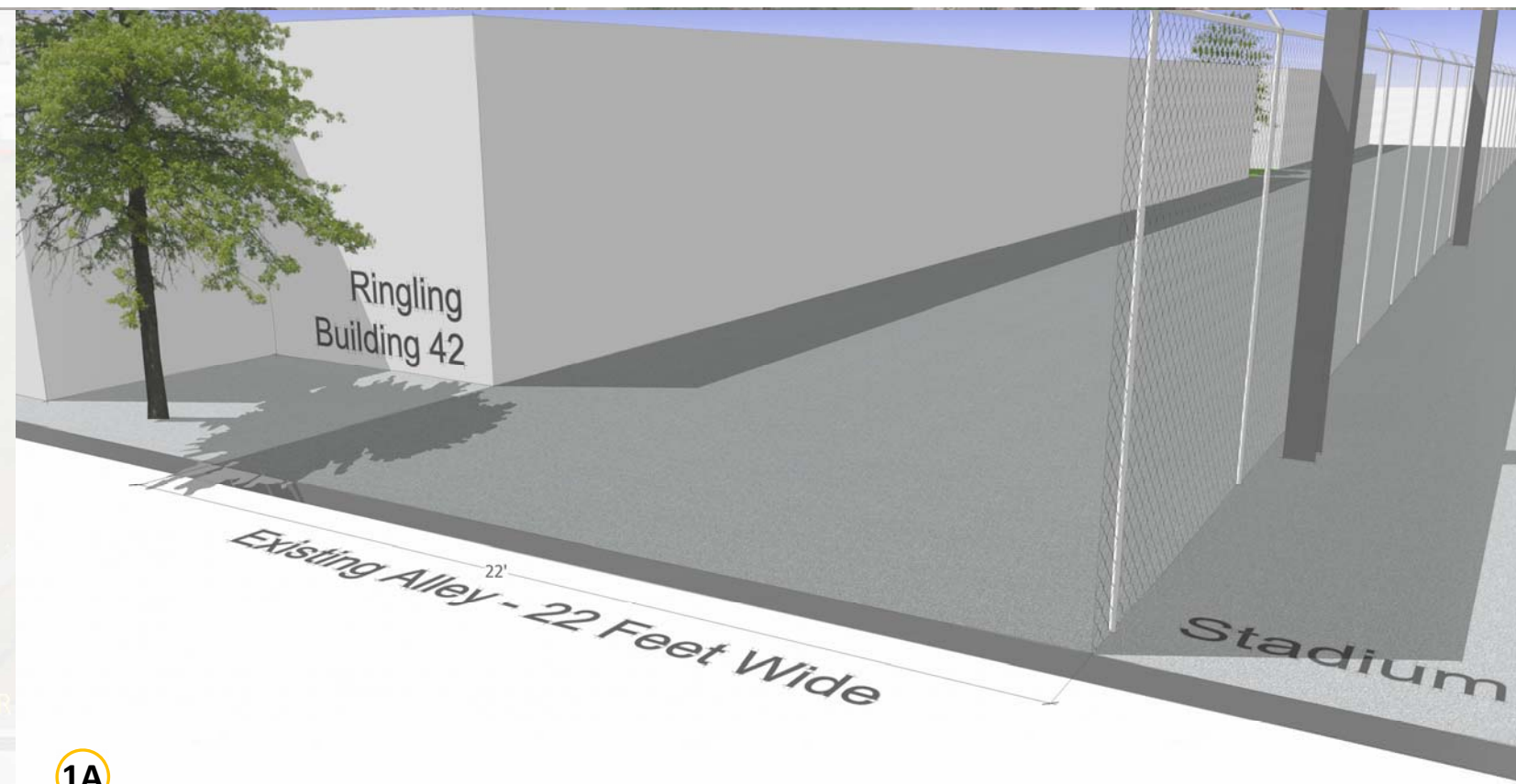
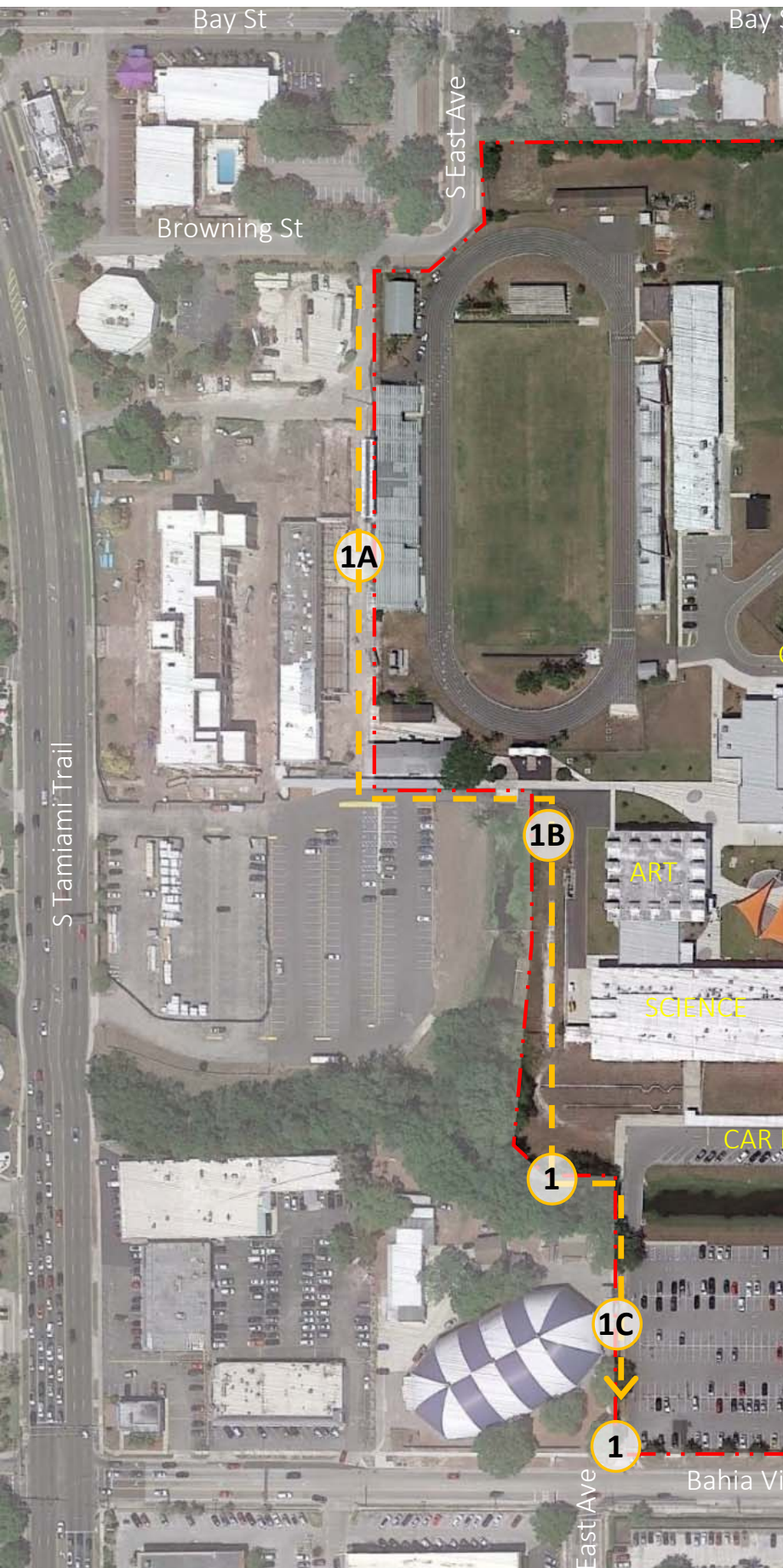
- Paving/Striping
- Fencing
- Lighting
- Signage
- Landscape/Benches

1A: Approx. \$750K

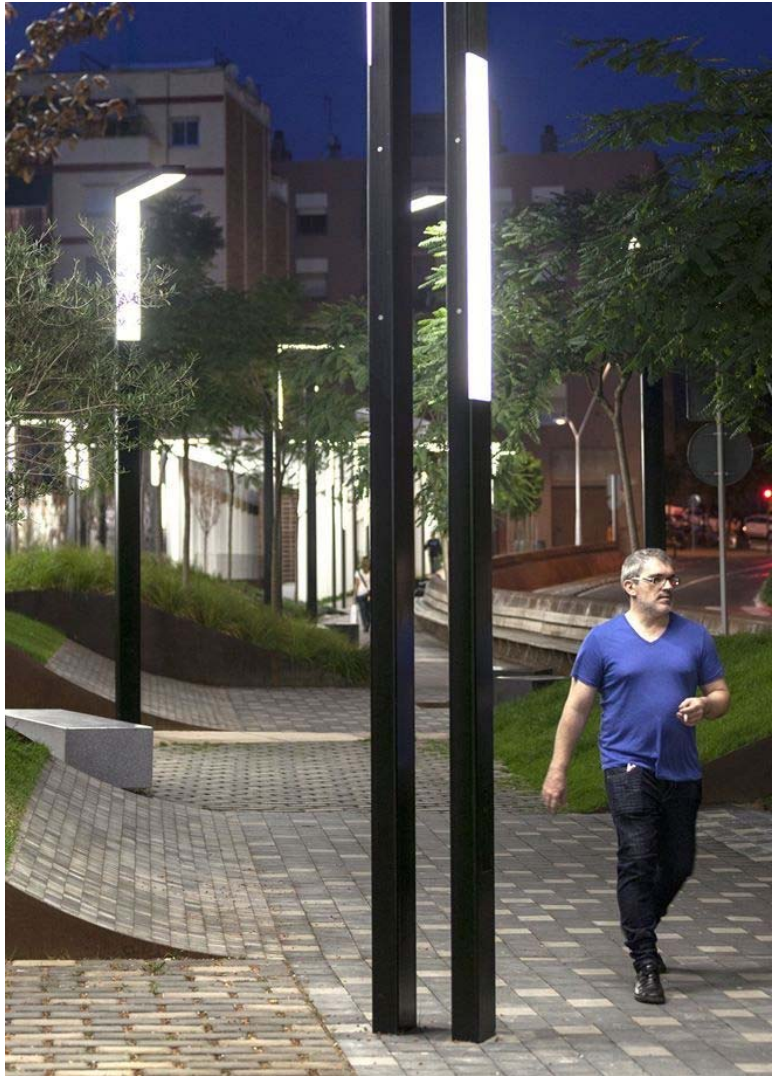
1B: Bridge

- Paving/Striping
- Fencing
- Lighting
- Signage

1B: Approx. \$150K



Pathway Lighting



Sarasota High School
June 26, 2018





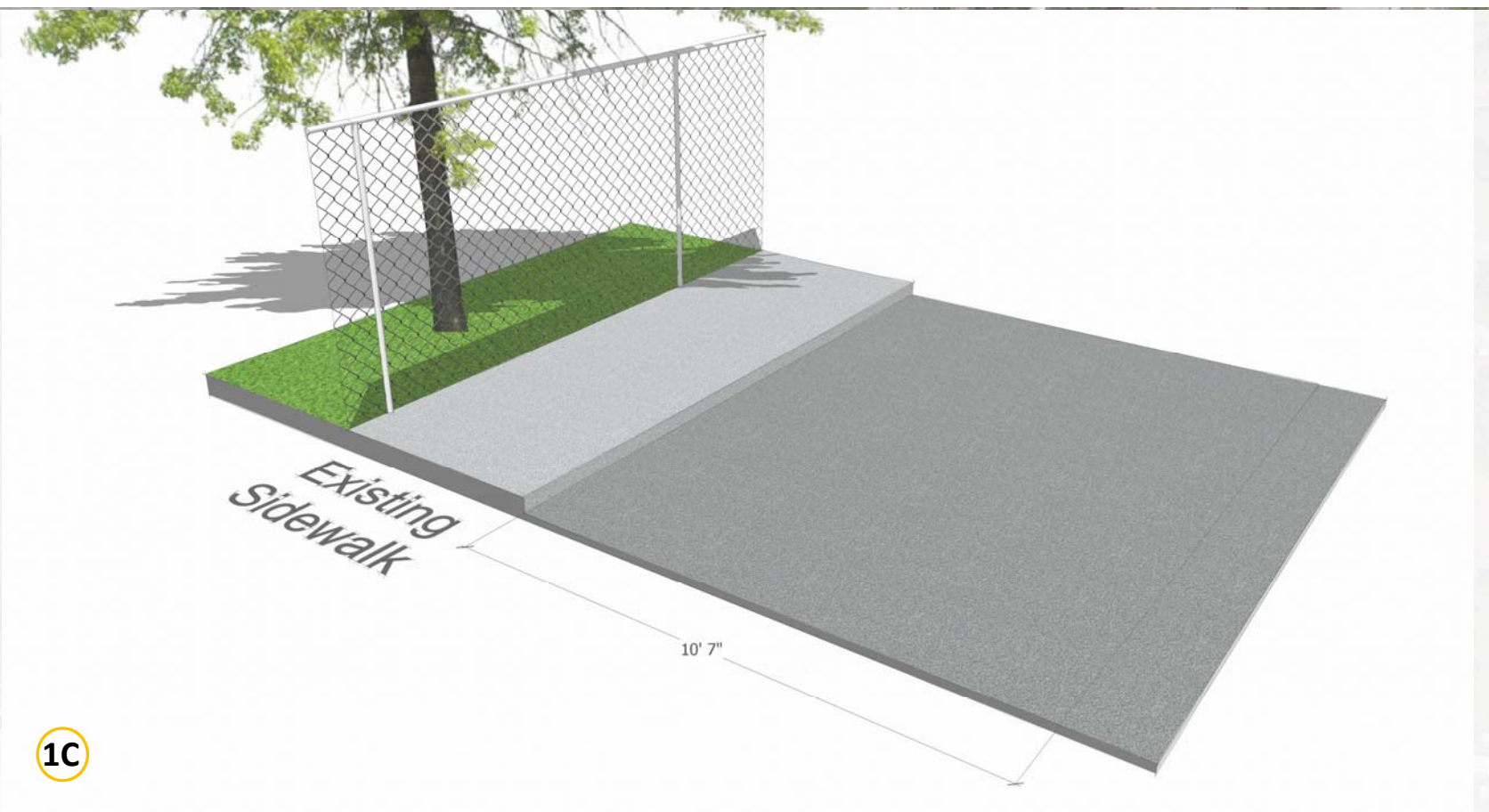
Common Ideas

1. WEST
Avenue of The Arts
2. EAST
Walk and Bike Path
Wayfinding
Shade Trees

Goals

Consensus of Ideas, yet keep in mind:

- Budget Limitations
- DRC Process
- Permitting
- Utilities
- Schedule
- Unforeseen Obstacles



1C



1C





Bike & Walking Paths



Sarasota High School
June 26, 2018



WEST COSTS

1A: Walk/Bike Path

- Paving/Striping
- Fencing
- Lighting
- Signage
- Landscape/Benches

1A: Approx. \$750K

1B: Bridge

- Paving/Striping
- Fencing
- Lighting
- Signage

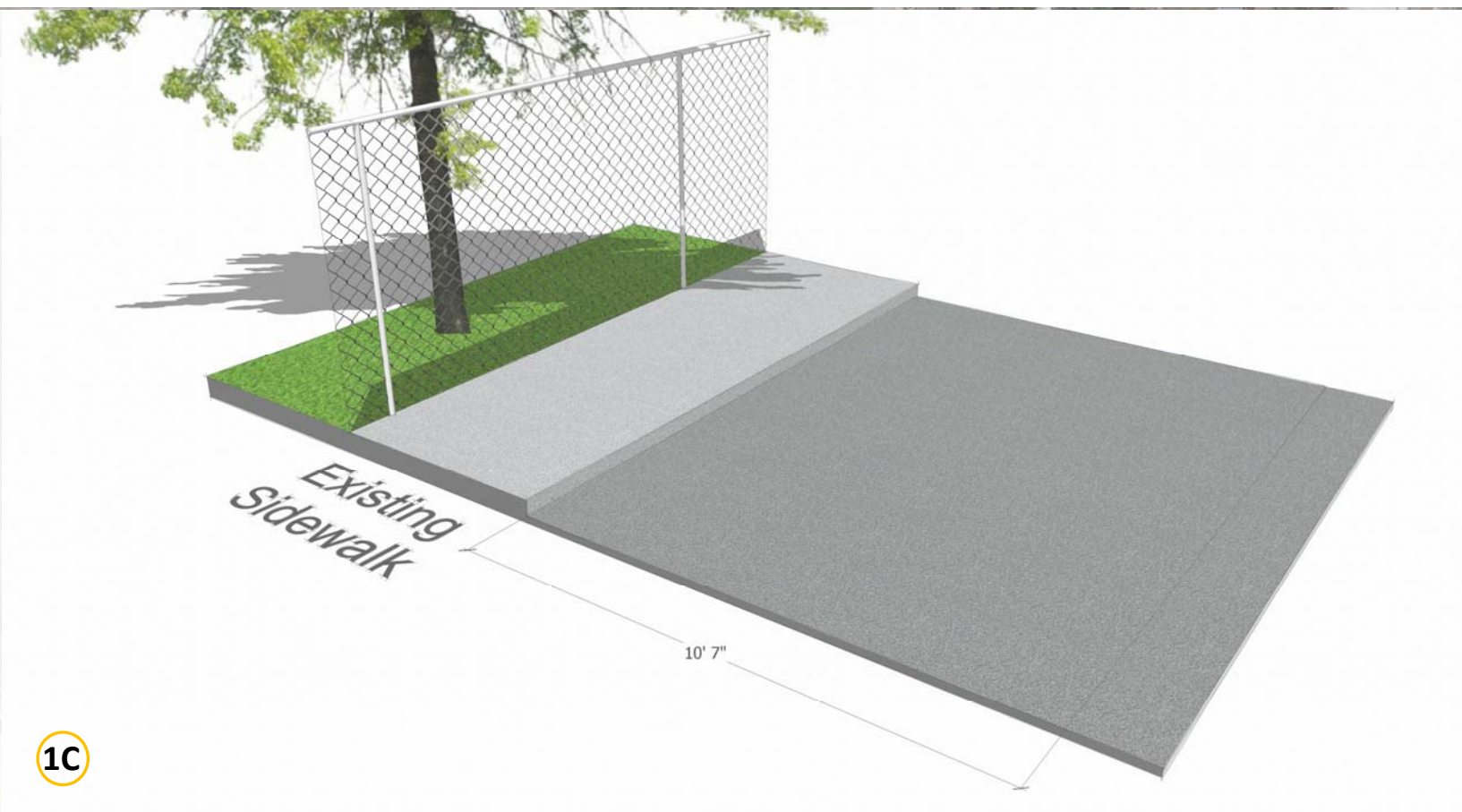
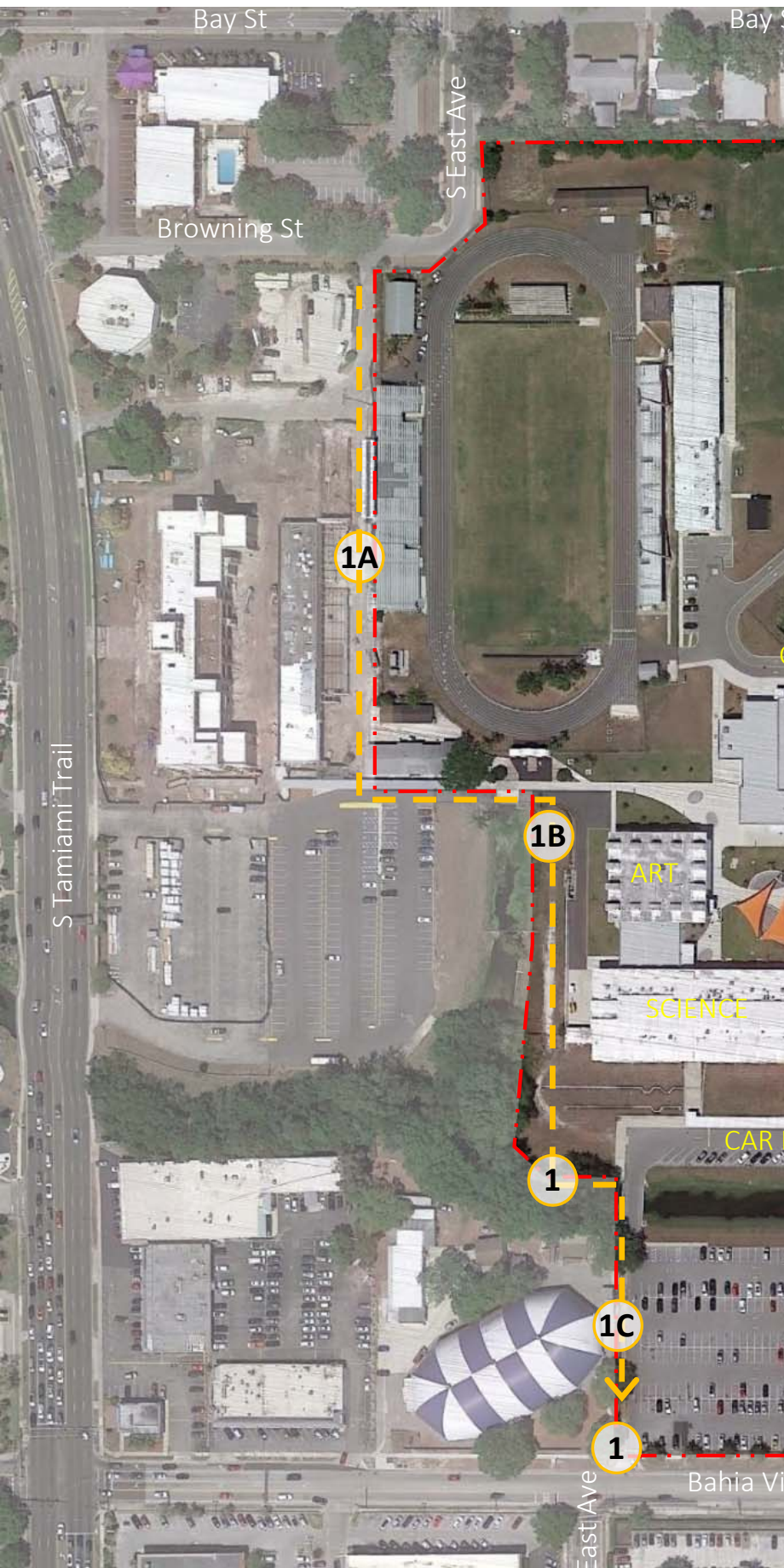
1B: Approx. \$150K

1C: Walk/Bike Path

- Paving/Striping
- Lighting
- Signage

1C: Approx. \$100K

\$1,000,000



1C



1C



Shade Structures



Sarasota High School

June 26, 2018



Sarasota High School

June 26, 2018

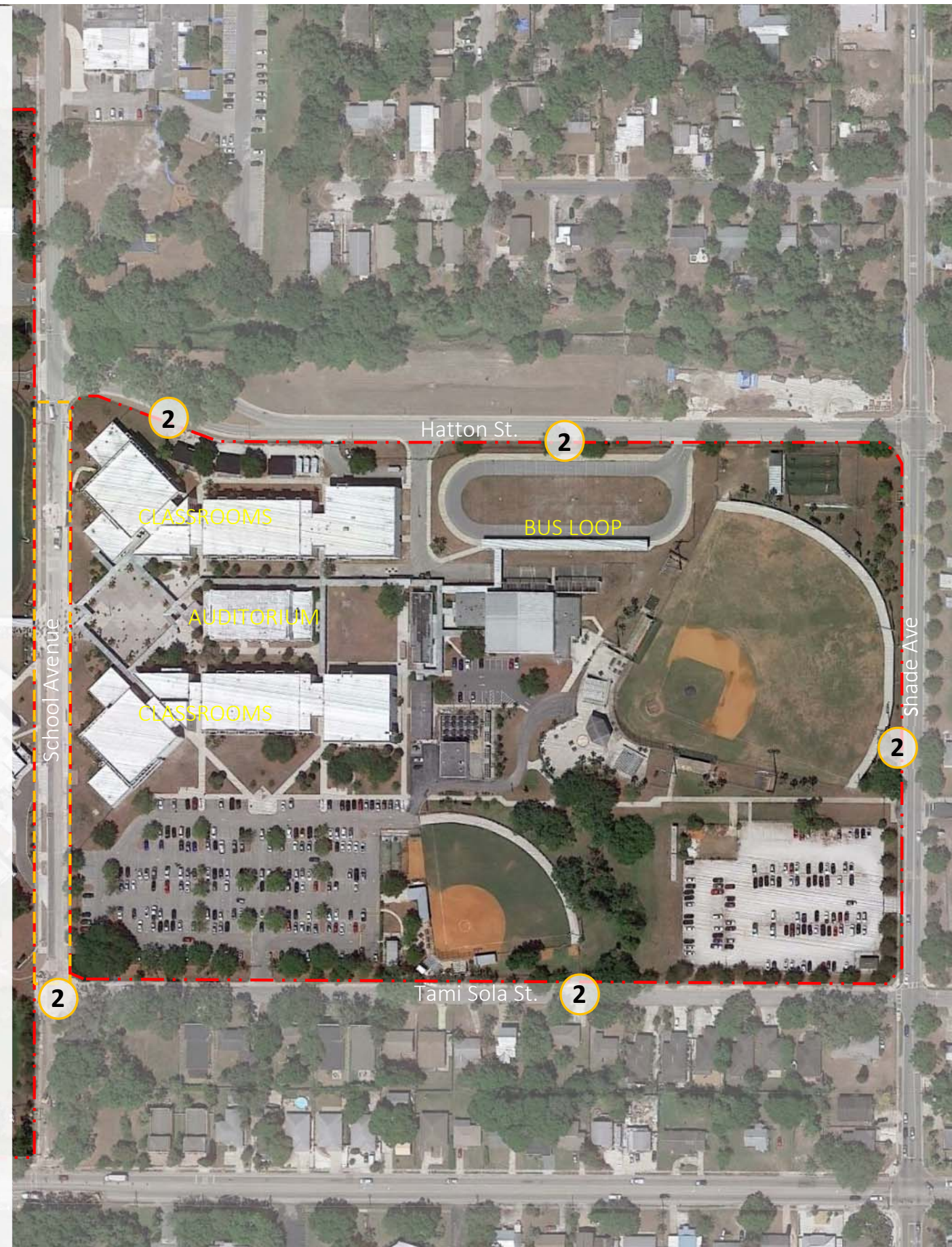
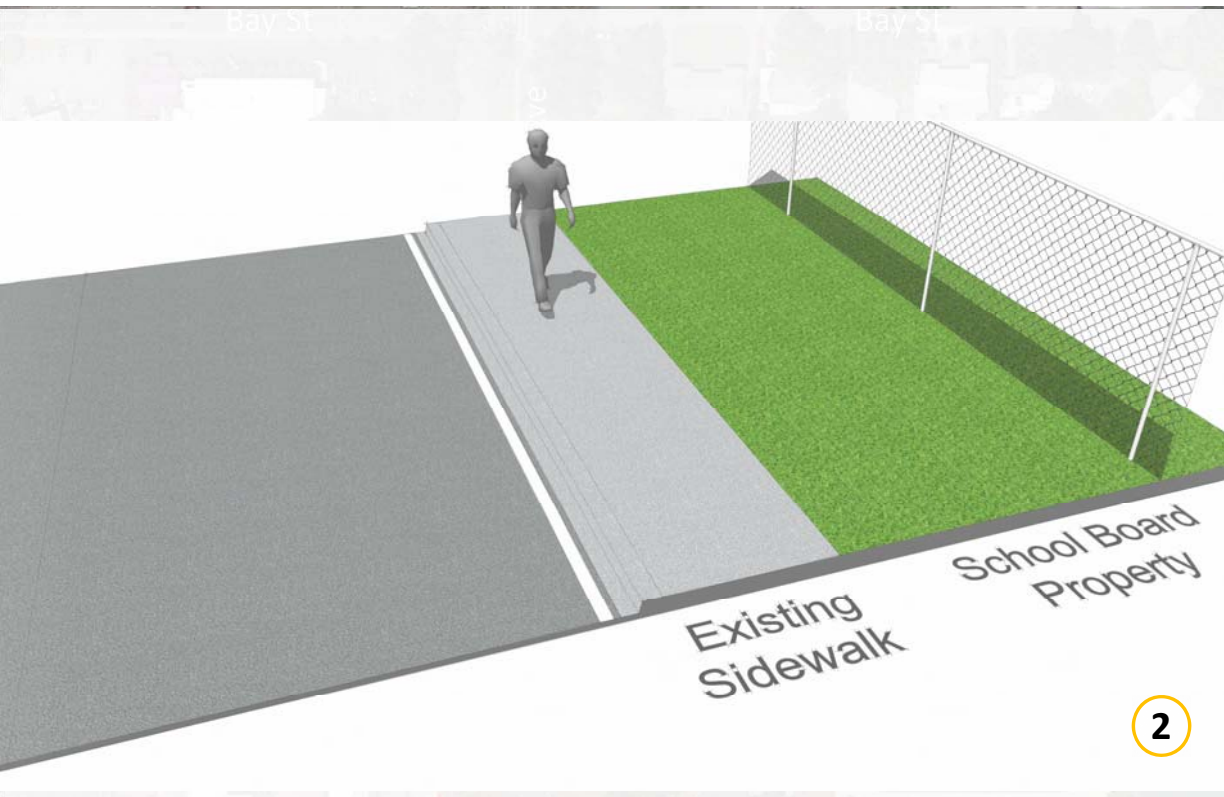
Common Ideas

1. WEST
Avenue of The Arts
2. EAST
Walk and Bike Path
Wayfinding
Shade Trees

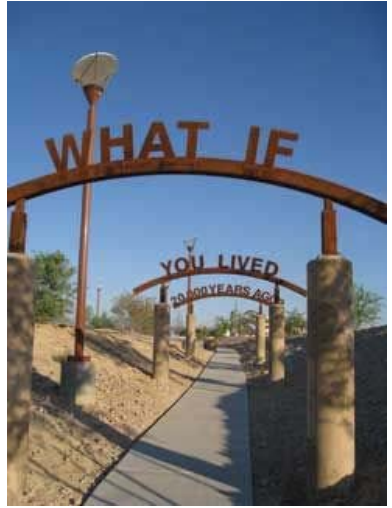
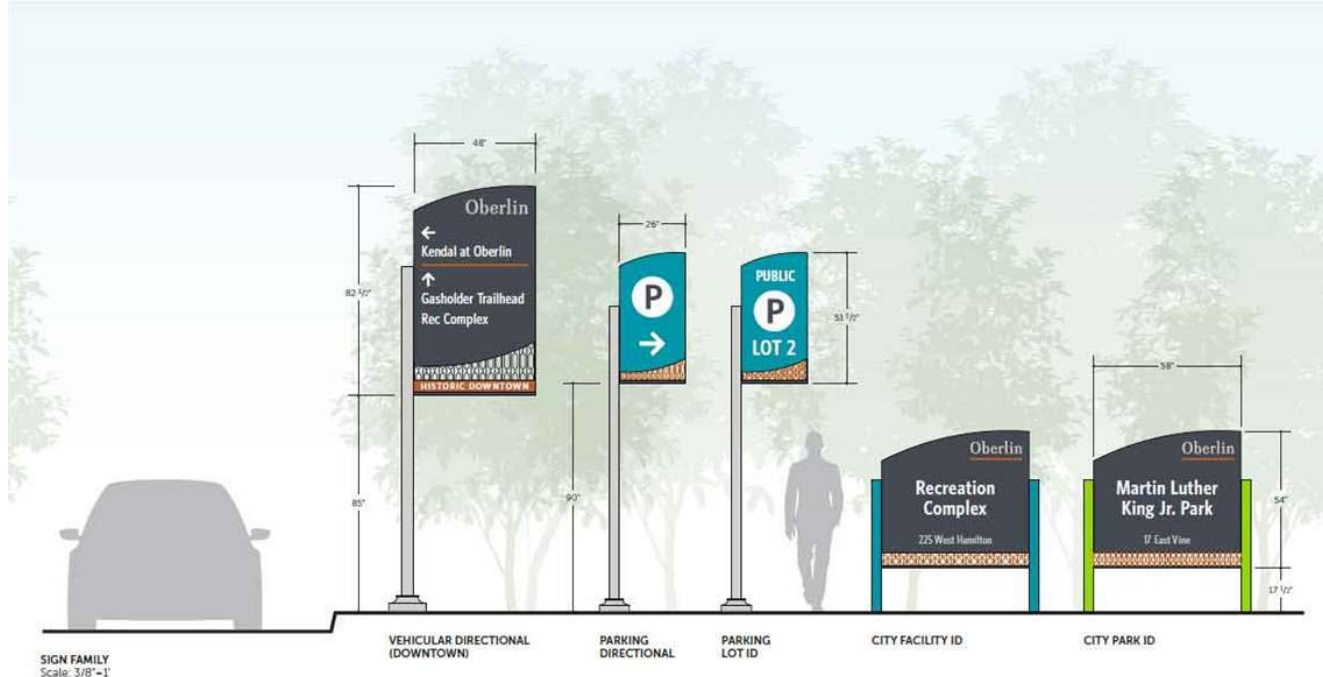
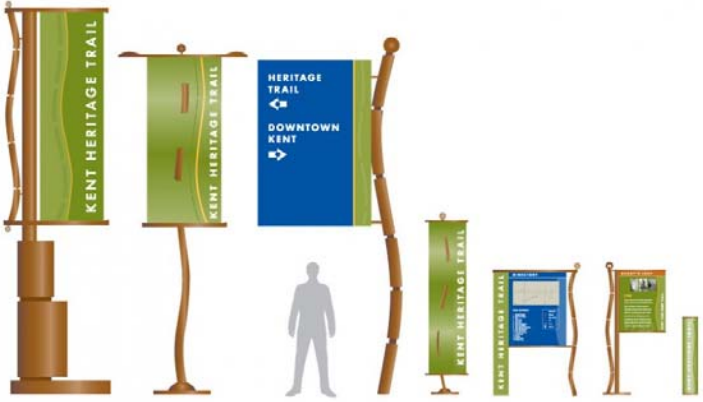
Goals

Consensus of Ideas, yet keep in mind:

- Budget Limitations
- DRC Process
- Permitting
- Utilities
- Schedule
- Unforeseen Obstacles



Signage & Wayfinding



Design Option 1



Sarasota High School
June 26, 2018



EAST COSTS

2A: Walk/Bike Path

- Widen Sidewalks
- Relocate 8 Light Poles
- Relocate Sign Posts
- Relocate Utility Box

2A: Approx. \$750K

2B: Wayfinding

- Striping
- Lighting
- Signage

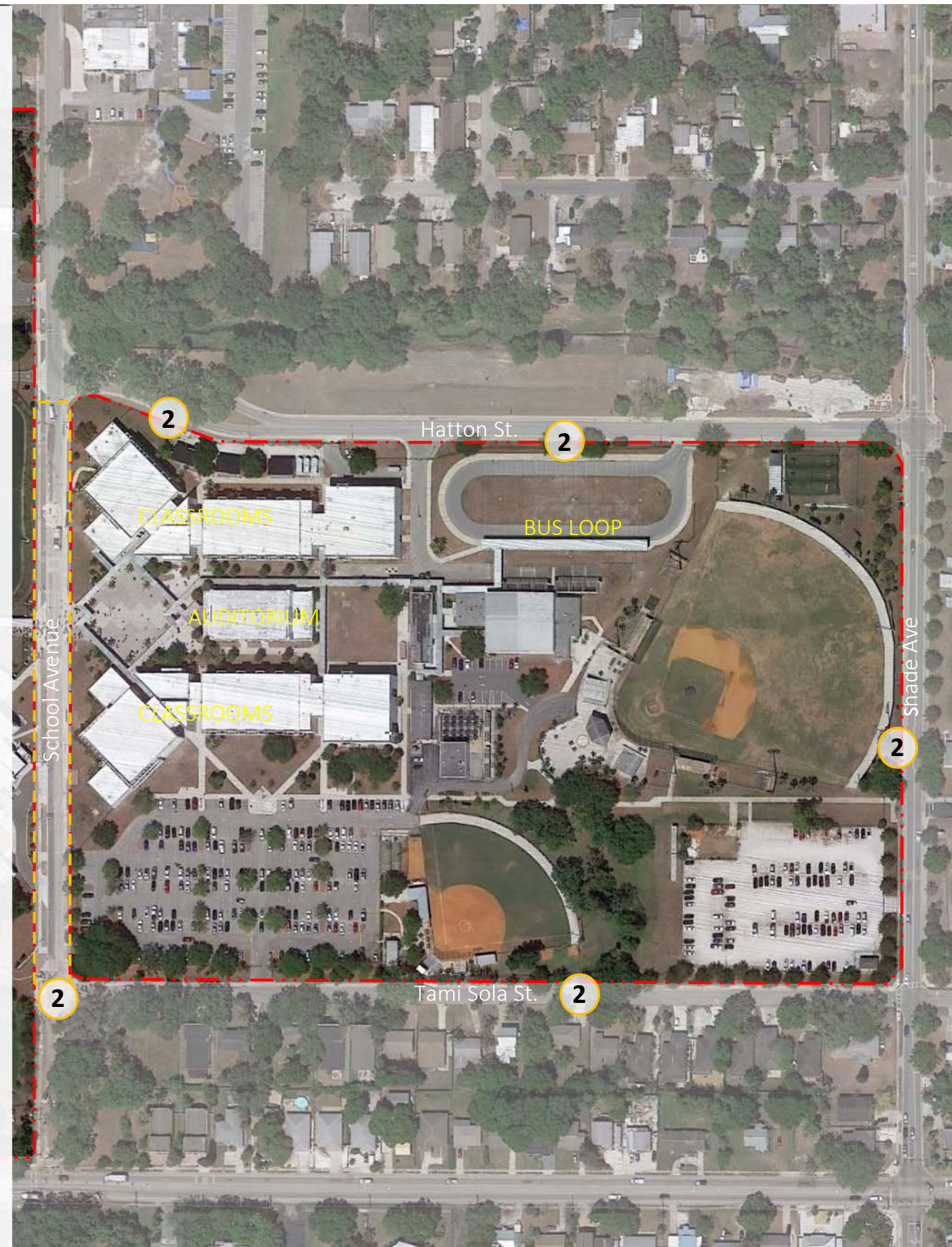
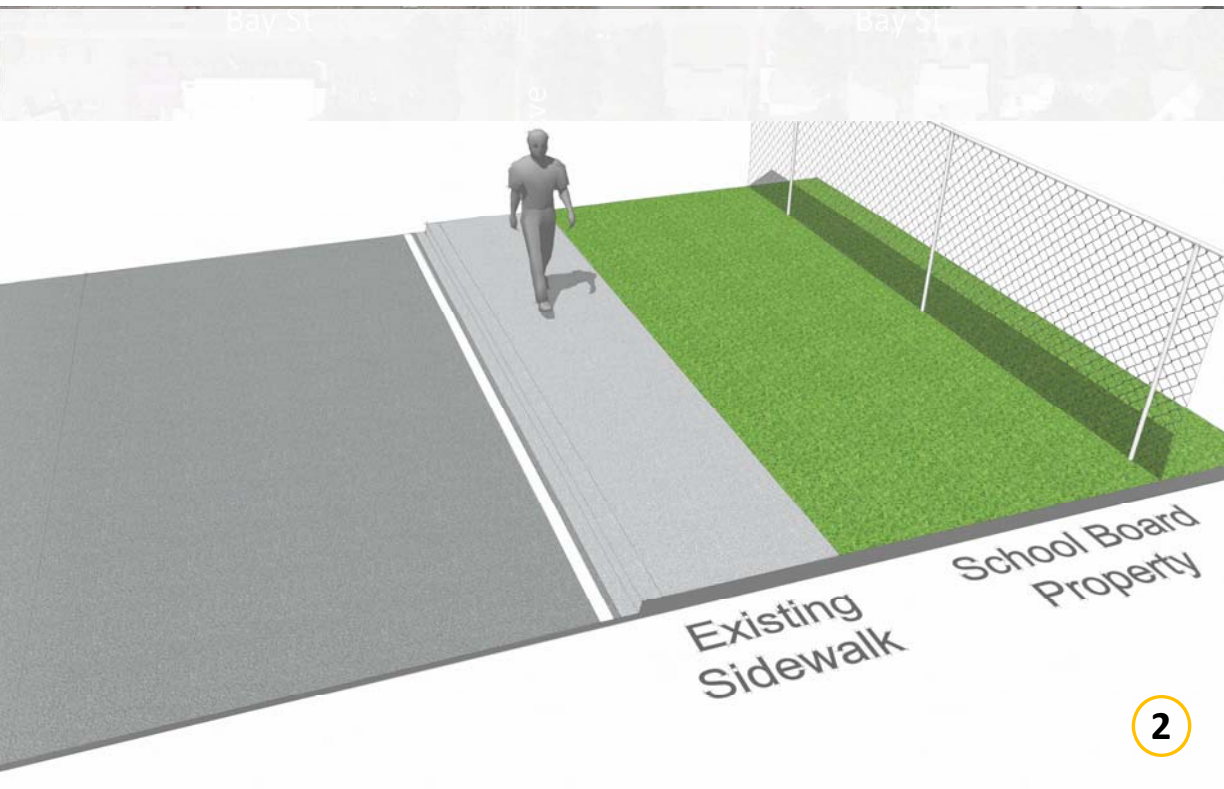
2B: Approx. \$150K

2C: Shade Trees

- Landscape/Benches

2C: Approx. \$100K

\$1,000,000





Fence & Wall Beatification



Sarasota High School
June 26, 2018



Thank You!!

